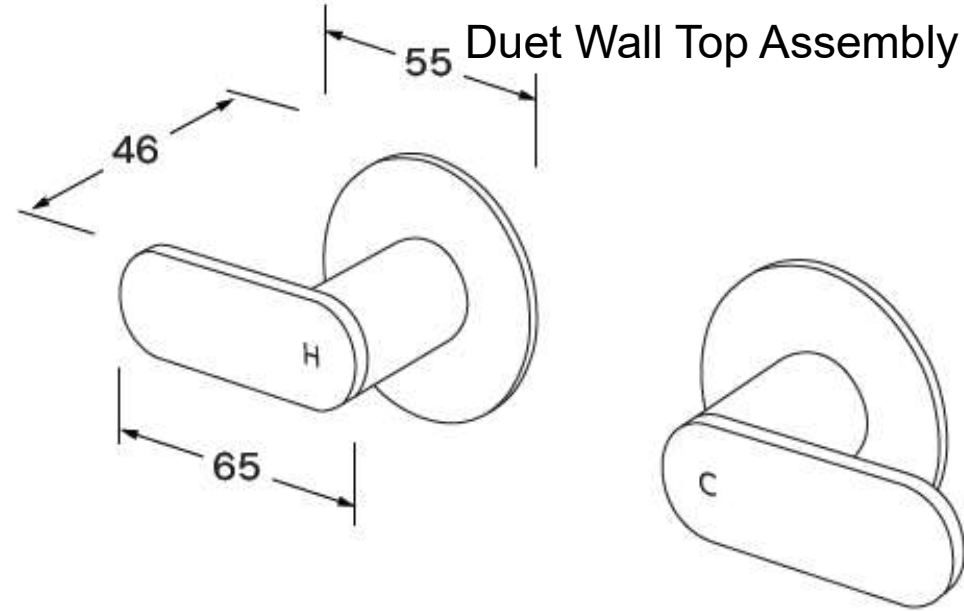


SUSSEX

Product Code: DUT-10



Product features

- Designed and manufactured in Australia
- All brass construction
- 1/4 turn ceramic disc spindles
- Available in a range of high quality, durable finishes inc. LUXPVD®
- Minimal, refined design to complement any contemporary space
- Matching tapware and showers

Warranty

15 Year overall warranty.
Refer to Warranty sheet for
specific information.

Pressure rating

300 - 500kPa

Temperature rating

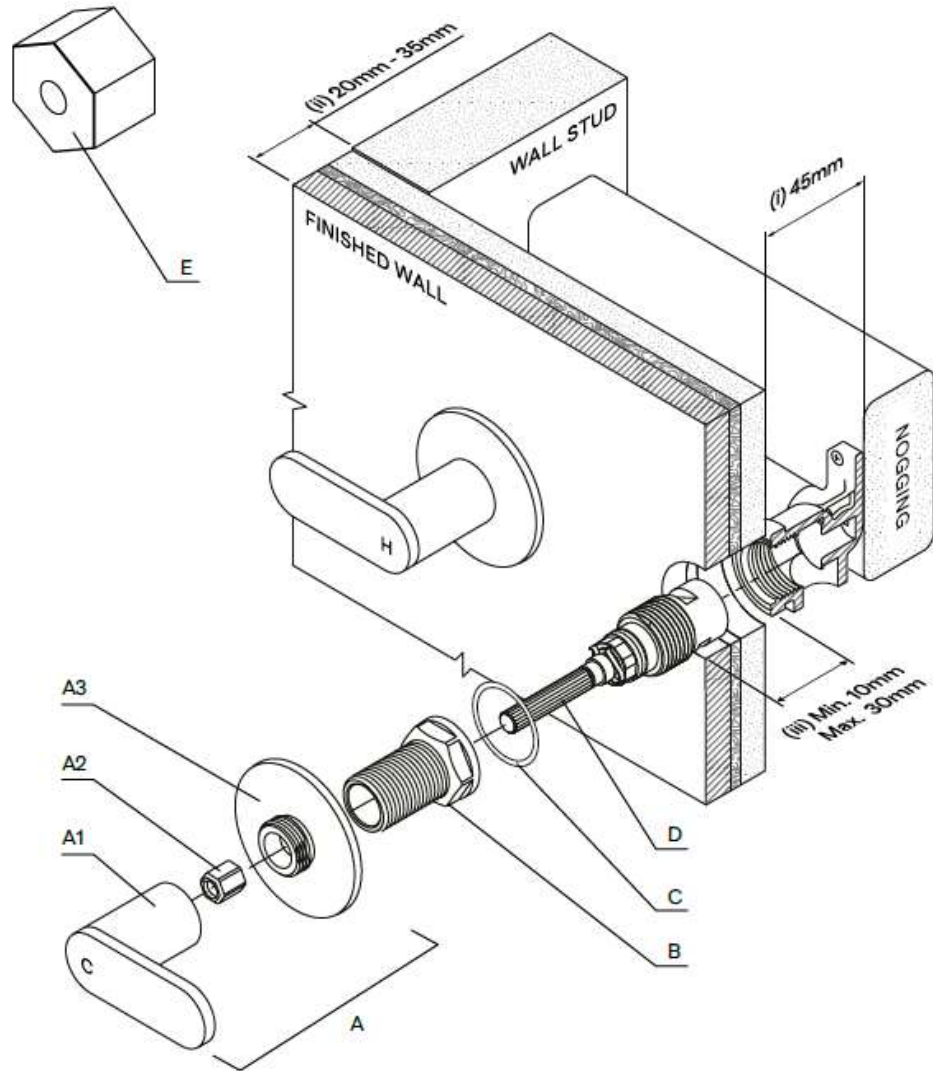
1 - 65°C



ACS

1300 898 889

www.acsbathrooms.com.au



Rough-in Option 1: Installing tapware into a new wall breach

- A standard Plumbing Wall Breach (not supplied) is to be used in conjunction with this Tapware.
- Secure a nogging 45mm (i) back from the front of the stud. Attach the Wall Breach to the nogging.
- Ensure the Breach Tap Seat Bodies are square and parallel between the Wall Studs.
- To fit correctly, the thickness of the finished Wall coverings is calculated between 20mm and 35mm (ii)
- The Tap Seat Body of the Breach MUST be a minimum of 10mm and a maximum of 30mm (iii) back from the finished wall coverings.
- If the wall coverings and Tap Seat Body do not sit within the range specified. Please contact manufacturer.

Rough-in Option 2: Installing into an existing wall breach

- Remove the old Spindles and clean surrounding area.
- Use a re-seating tool to dress the Seat and ensure the Spindle Seat is clean, flat and free of any debris.
- Ensure the Breach Tap Seat Bodies are square and parallel between the Wall Studs.
- The Tap Seat Body of the Breach MUST be a minimum of 10mm and a maximum of 30mm (iii) back from the finished wall coverings.
- If the finished wall coverings and Tap Seat Body do not sit within the range specified. Please contact manufacturer.

Product parts

- (A) Handle Assembly (consisting of A1 - Handle, A2 - Spindle Adapter and A3 - Dress Ring).
- (B) 50mm Locknut.
- (C) Fibre Washer.
- (D) 90mm Spindle.
- (E) Spindle Sizing Gauge

Plumber note

- Tapware is to be installed by a Licensed Plumber in accordance with AS/NZS 3500:2021
- Recommended working water pressure 300 - 500 Kpa. Maximum water temperature is 65°C
- After installation, ensure that tapware functions correctly without leaks.
- Please ensure a copy of the Installation Instructions are left with the end user for future reference.

