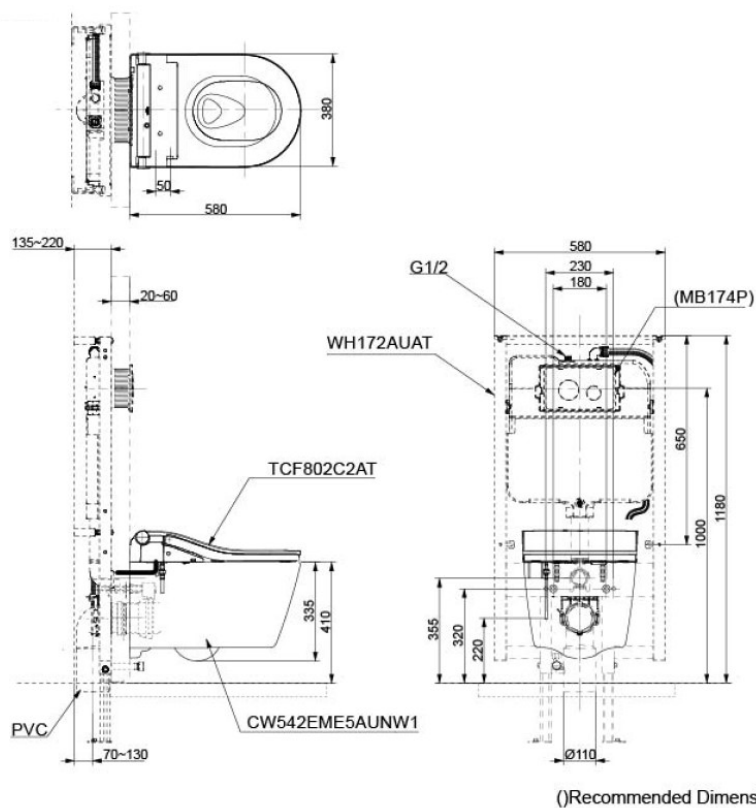


Product Code: TOTO-81a  
TOTO Fully Concealed Wall Hung D Shaped Pan & Rx Washlet with Manual Flush



- **CEFIONTECT Technology:** super smooth, ion barrier glazing for a clean toilet bowl
- **TORNADO FLUSH** for powerful flushing with less amount of water
- **RIMLESS DESIGN** bowl ensures easy cleaning and ultimate hygiene
- **EWATER+** keeps nozzle and bowl clean with sanitizing effect against bacteria
- Fully equipped with rear, front and oscillating & pulsating cleansing function
- Temperature control **HEATED SEAT**
- **PREMIST** a fine spray of mist making it difficult for dirt to adhere
- Auto lid opening and closing

EWATER+ is made from tap water by electrolyzed chloride ion. After use, it returns back to ordinary state of water

<b>BOWL:</b>	
<b>Flush System:</b>	TORNADO FLUSH
<b>Water Use:</b>	4.5L / 3L
<b>Rough-in:</b>	H=220
<b>Bowl Shape:</b>	D-Shape
<b>Water Pressure:</b>	0.05MPa~0.75MPa
<b>Size:</b>	380W x 580D x 335H mm
<b>WASHLET:</b>	
<b>Power Rating:</b>	220~240V , 50/60Hz , 826~837W
<b>Length of Power Cord:</b>	0.9 m
<b>Size:</b>	383W x 579D x 108H mm

Seat & Cover are not included

- **CW542EMES5AUNW1**  
D-Shape Wall Hung Closet Bowl (P-Trap)  
with Concealed feature, hiding all wiring  
inside the bowl
- **TCF802C2AT**  
Concealed WASHLET RW (Auto Flush)
- **WH172AUAT (Yet to be launched)**  
Concealed Tank (4.5L / 3L)

### Optional Parts

- MB174P  
Flush Panel

### NOTE

- DO NOT COUPLE THIS WC  
WITH FLUSH VALVE

White

## Certifications



ACS

1300 898 889

[www.gcsbathrooms.com.gu](http://www.gcsbathrooms.com.gu)

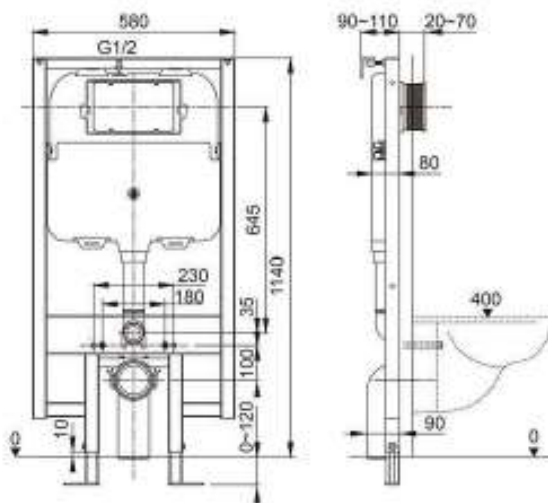
As part of ACS commitment to quality products, information provided in this data sheet is representative of the actual product available at the time of printing. Due to our commitment to continuous product design and development, the designs and specifications depicted are subject to change without notice. Please confirm all particulars with your ACS sales consultant prior to purchase. Each product is covered by a limited warranty. Please see our website for full terms and conditions. This drawing remains the property of ACS and should not be copied or distributed without ACS consent. © 2010 All Dimensions are approximate in mm and are not to scale.

# TOTO

Product Code: TOTO-81

TOTO Fully Concealed Wall Hung D Shaped Pan & Rx Washlet with inwall Flush

**AXENT**  
SWITZERLAND



## Specification

Name	Concealed Cistern with Frame	SKU code	
Size(mm)	1140*80*580	Flush volume	3 / 4.5 L
Color	Grey	Water intake mode	Top Inlet
Material	PC+SS	Water inlet connection	G1/2"
Applicable water pressure(MPa)	0.07~0.75	Gross weight(kg)	17
Volume (m³)	0.122	Net weight(kg)	15
Operation mode	Front Press	Certification obtained	WELS, WATERMARK, WRAS, SASO, SIRIM



# ACS

1300 898 889

[www.acsbathrooms.com.au](http://www.acsbathrooms.com.au)

As part of ACS commitment to quality products. Information provided in this data sheet is representative of the actual product available at the time of printing. Due to our commitment to continuous product design and development, the designs and specifications depicted are subject to change without notice. Please confirm all particulars with your ACS sales consultant prior to purchase. Each product is covered by a limited warranty. Please see our website for full terms and conditions. This drawing remains the property of ACS and should not be copied or distributed without ACS consent. © 2010 All Dimensions are approximate in mm and are not to scale.