



S U S S E X

Tapware is to be installed by a Licensed Plumber in accordance with AS/NZS 3500:2003

Recommended working water pressure 300-500 kpa.
Maximum water temperature is 65 deg c.

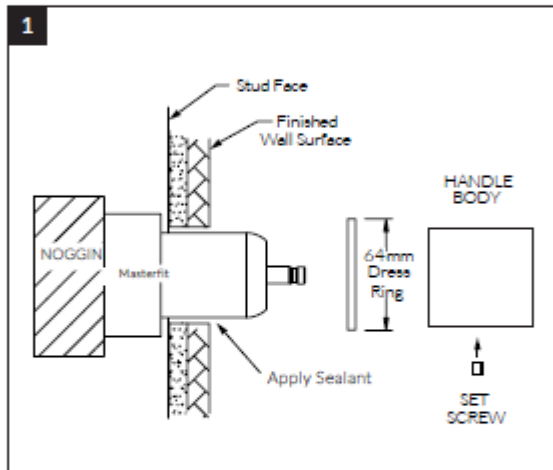
Circa

INSTALLATION GUIDE

Circa Shower Mixer System

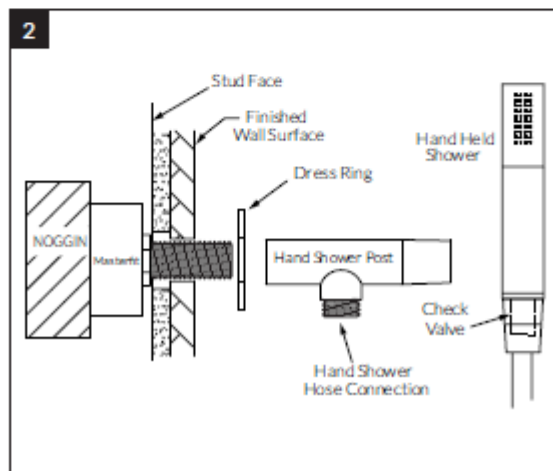
Dress Kit

Product Code CIR-13



MIXER DRESS KIT

- Remove Mixer protective cover.
- Seal the wall surface around the Mixer and Outlet threads using appropriate sealant.
- Fit the Dress Ring to the Mixer.
- Fit the Handle Body onto the Mixer Cartridge Lever and ensure full engagement.
- Secure the Handle Body by tightening the Set screw using the Allen Key provided (tighten well).
- To complete installation, operate the Mixer(s) checking the flow of both hot and cold water from the Outlet. Check all fittings and fixtures for water leaks.



HAND SHOWER FIT OFF

- Apply sealing tape (Teflon) to male thread.
- Place Dress Ring over prepared male thread.
- Fit Hand shower Post.
- Connect the Hand Shower Hose to Post.

ACS

1300 898 889

www.acsbathrooms.com.au

Tapware is to be installed by a Licensed Plumber in accordance with AS/NZS 3500:2003

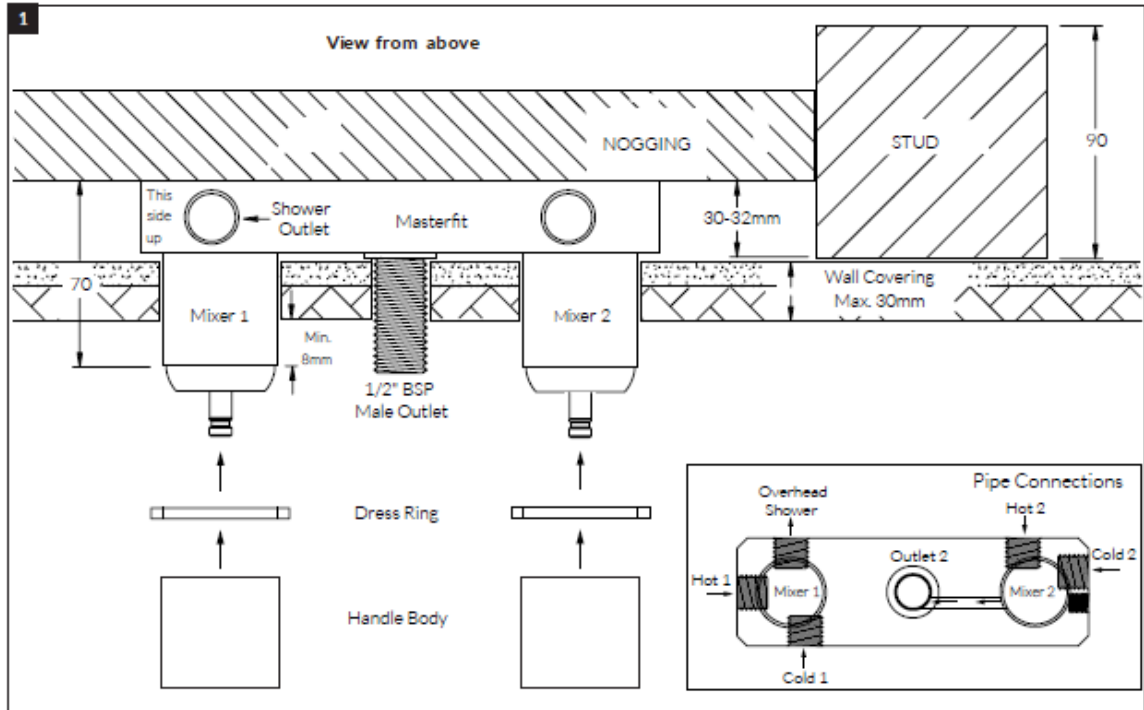
Recommended working water pressure 300-500 kpa.
Maximum water temperature is 65 deg. c.

INSTALLATION GUIDE

Shower Mixer System

Rough-In

Product Code CIR-13



ROUGH IN PLUMBING

- Prior to installing calculate the finished wall thickness, maximum is 30mm thick.
- If wall thickness is greater than 30mm, contact manufacturer for further options.
- Prepare Nogging to be fixed parallel between the Wall Studs.
- The Nogging must be fitted to enable the base of the Masterfit to be 30-32mm back from the Stud Face.
- The Masterfit will be marked "This side up" to indicate orientation.
- Using the screws (x4) provided, mount the Masterfit to the Nogging. Ensure the Masterfit is level and square.

PIPE CONNECTIONS

- The Hot and Cold ports are marked on the Masterfit. (Mixers have individual Hot/Cold inlet ports).
- Flush all water feed lines. All lines must be free from any dirt and debris before connecting to the Masterfit.
- Connect Hot and Cold lines to the corresponding 1/2" BSP ports of the Master fit. (see Drawing)
- Do not remove any factory fitted pressure plugs or Fixings.
- Once all water connections are made, check Hot/Cold water flow by operating the Mixer Cartridge.
- Check all fittings and fixtures for leaks.
- Leave the Mixer(s) in the closed position and replace the Mixer protective cover.
- Store the Dress Kit in a safe place until required (see Dress Finishing Guide).

PLUMBER NOTE:

- On-site high pressure line testing must be conducted with the Mixer in the closed position. (STATIC TEST ONLY)
- Under no circumstances is the Mixer to be opened when exceeding the maximum stated water pressure.
- At the completion of the testing, do not relieve any high pressure by opening the Mixer.
- Exposing the internals of the Mixer Cartridge to higher than specified water pressures, will void the manufacturer's warranty.

ACS

1300 898 889

www.acsbathrooms.com.au