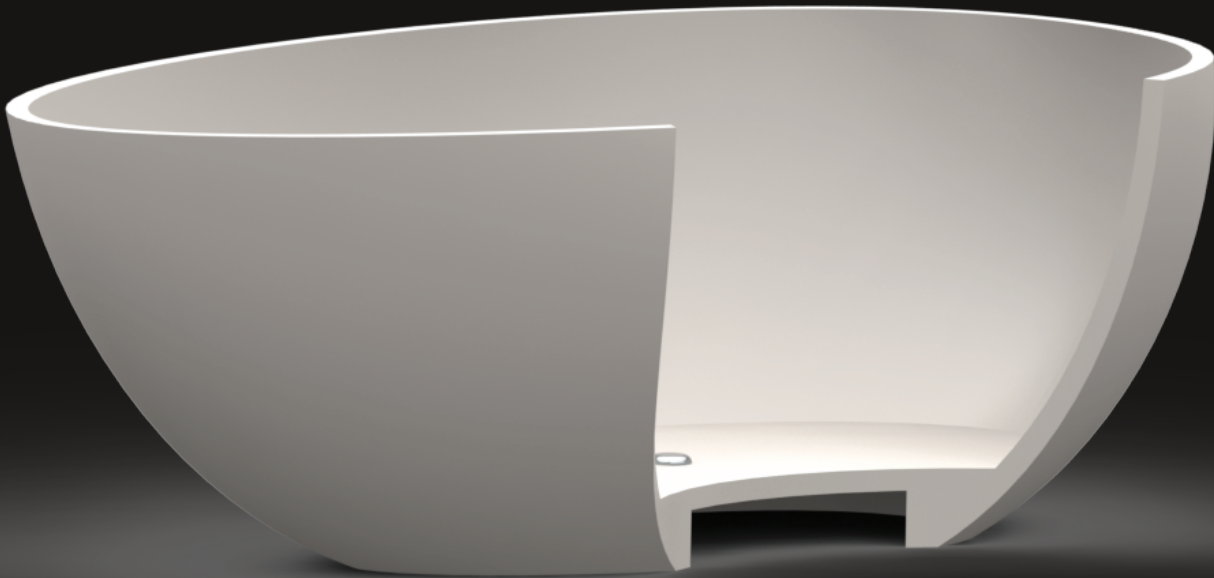


moda

High Stone Content
70%



Isostonetm

Stronger, Smoother, Purer

Using specialised technologies and craftsman, Moda has been able to replicate the properties of Isotropic Calcite (white marble). Isostone is a carefully mixed composite of Limestone (70%) interlaced with complex resins. The end result is a solid material, with a smooth and silky matt finish that is every bit as beautiful as sculpted marble.

For centuries artists have treasured white marble as the most luxurious and elegant of stones. It's low refractive index allows light to penetrate the surface, bringing depth and 'life' to sculptures. Nature transforms Limestone into marble by metamorphosing the structure of the minerals into an interlocking mosaic of calcite crystals. The result is a beautiful Isotropic stone that is pure in content and colour. Isostone carries these qualities with added strength and a flawless finish. Cast into exquisitely designed baths and basins, bathrooms can now be transformed into true masterpieces.