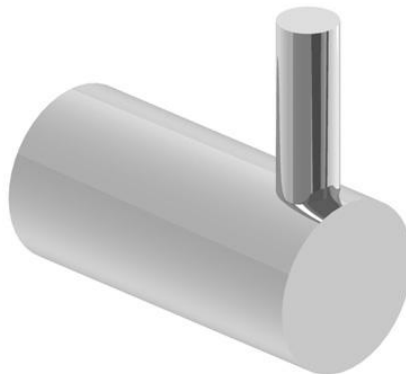


The last bastion of privacy, a space of peace and tranquillity, your Bathroom
Enjoy the look and feel of our European Bathroom fittings and fixtures.
Designed and made to the highest International and Australian standards.



MINUS ROBE HOOK



Measurements:

h: 40mm w: 20mm d: 40mm

- CODE: MINUS04
- Manufactured in Australia
- Warranty 10 Years
- Double fixing system
- Includes diamond drill bit. drilling fixture
- Wall plugs & screws supplied - suitable for tiles or masonry
- Optional fixing kits for glass. plasterboard and glue only
- Mirror polished chrome plated brass (Standard)
- Custom finishes and plating options (SMO)

SYDNEY

Woollahra

163 Edgecliff Road

Woollahra NSW 2025

T 02 9386 9809

Crows Nest

113A Willoughby Road

Crows Nest NSW 2065

T 02 9460 6111

MELBOURNE

Richmond

229 Swan Street

Richmond VIC 3121

T 03 9428 9996

QUEENSLAND

Fortitude Valley

Shop 2, 826 Ann Street

Fortitude Valley QLD 4006

T 07 3852 6363

The last bastion of privacy, a space of peace and tranquillity, your Bathroom
Enjoy the look and feel of our European Bathroom fittings and fixtures.
Designed and made to the highest International and Australian standards.



Installation Guide

TAGO, PLUS, MINUS, BLOQUE Bathroom Accessories

Version: 2.0

avenir®
FUTURE DESIGN

Thank you for choosing AVENIR Bathroom Accessories and for supporting Australian designed and manufactured products.

PLEASE READ THIS INSTALLATION GUIDE

THE INSTALLATION PROCEDURE FOR THIS PRODUCT IS NOT THE SAME AS OTHER PRODUCTS.

USE THE FIXINGS WE SUPPLY – THEY HAVE BEEN TESTED AND WE KNOW THEY WORK.

THE WARRANTY COVERS MATERIAL AND WORKMANSHIP DEFECTS – NOT INSTALLATION ISSUES

SUPPLIED FIXING KIT

- The supplied fixing kit includes wall plugs, stainless steel screws, epoxy glue (*applies to items with single wall mounts only*) and a diamond drill bit. These are suitable for the below wall types. We suggest drilling the holes as far from the edges of the tiles as possible. It is not recommended to drill the fixing holes on the grout lines. When supplied, it is **ESSENTIAL** to use the supplied epoxy glue when **BOTH** inserting the wall plug(s) into the hole(s) **AND** when fixing the screw(s) into the wall plug(s). Failure to use the supplied wall plugs, screws and the epoxy glue will void the warranty.
 - Masonry walls with or without tiles.
 - Non-Masonry walls (stud walls) **with** tiles.

OPTIONAL FIXING KITS (*One required per wall mount*)

- **Plasterboard Fixing Kit:** Most Avenir accessories can be mounted onto plasterboard using the optional plasterboard fixing kit (sold separately). This includes a backing flange and expanding plasterboard toggles. This kit is **always** required for installation onto plasterboard, even if studs are provided behind the plasterboard.
- **Glass Fixing Kit:** Most Avenir accessories can be mounted onto toughened glass provided both sides of the glass are accessible (e.g. shower screens). Provision must be made for a single hole (10mm diameter) at each fixing location. Some items will require a slot (24mm x 10mm) - this requires a water jet cutting process. The hole or slot must be drilled/cut prior to the glass being toughened. Please consult your glass supplier for more information. Avenir produces a glass fixing kit (sold separately) for this purpose.
- **Glue Only Fixing Kit:** Most Avenir accessories can be fixed to a tiled or glass surface with our optional Glue Only Fixing Kit (sold separately). This includes a backing flange and special German glue (see: www.glabete.com) specially designed for bathroom accessories that is incredibly strong – no drilling is required and can also be removed completely later if required.

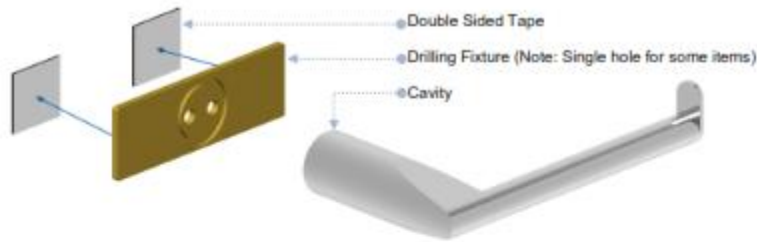
FAQ

- **What does the warranty cover?** Avenir provides a ten-year warranty against material and workmanship defects. This does not cover installation issues. Avenir accessories and installation systems are tried and tested and work perfectly when the installation instructions are followed **AND** our fixings are used. We do not come to site to rectify accessories that are not firmly fixed to the wall. This is an installation issue and not a product fault.
- **If I have lost some of the components or I need some advice, what do I do?** Give us a call – we are always happy to assist over the phone or send you free replacement parts if missing or lost.

The last bastion of privacy, a space of peace and tranquillity, your Bathroom
 Enjoy the look and feel of our European Bathroom fittings and fixtures.
 Designed and made to the highest International and Australian standards.

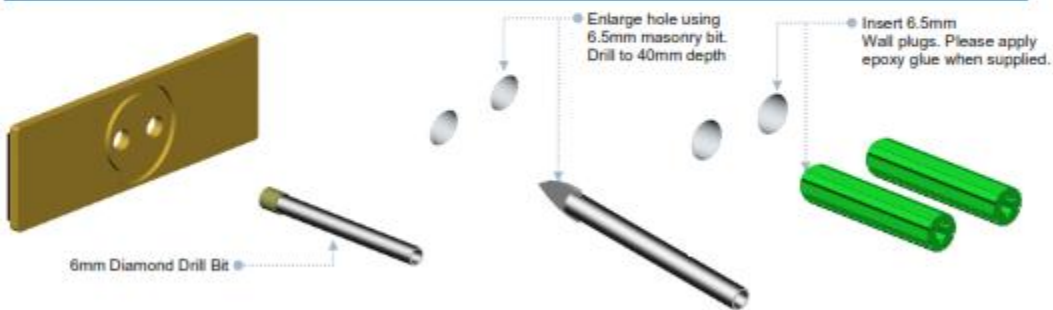


INSTALLATION PROCEDURE (for tiled or masonry walls)



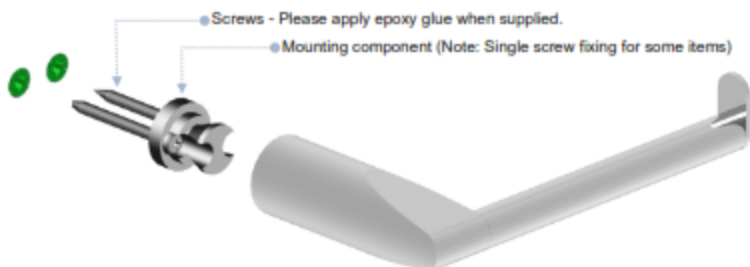
Prepare the Drilling Fixture(s)

Fit the supplied drilling fixture(s) into the cavity at the back of the accessory. Apply the double-sided tape to the flat face of each fixture. With the fixture(s) still attached to the accessory, press the drilling fixture(s) to the wall at the desired location and remove the accessory leaving the drilling fixture(s) located in the exact location.



Drill the Holes in the Wall

Using the drilling fixture(s) as a guide and the supplied 6mm diamond bit, drill holes through the wall surface. NOTE: The diamond drill bit is only used to create a pilot hole about 10mm deep and must be used in conjunction with plenty of water and at a slow speed. Remove the drilling fixtures(s) and double-sided tape. Use a standard 6.5mm masonry bit (not supplied) to enlarge the holes and drill to a depth 40mm. Mix and apply epoxy glue to wall plugs prior to inserting into the wall (Epoxy applies to items with single wall mounts only).



Attached the Accessory

Insert the screws through the mounting component(s) and again apply epoxy glue onto the screws prior to inserting them into the wall plugs (Epoxy applies to items with single wall mounts only). Fit accessory onto mounting component(s) and tighten the grub screw(s). Note: Epoxy glue dries in 30 minutes. Allow excess epoxy to cover and bond between the accessory and the wall. Clean up excess epoxy glue after 1 hour using a sharp blade.

www.avenir.com.au

www.acsbathrooms.com.au

The last bastion of privacy, a space of peace and tranquillity, your Bathroom
Enjoy the look and feel of our European Bathroom fittings and fixtures.
Designed and made to the highest International and Australian standards.



Installation Guide

Glue Only Wall mounting component Kit

Version: 1.01

avenir®
FUTURE DESIGN

Thank you for choosing AVENIR Bathroom Accessories and for supporting Australian designed and manufactured products.

PLEASE READ THIS INSTALLATION GUIDE

THE INSTALLATION PROCEDURE FOR THIS PRODUCT IS NOT THE SAME AS OTHER PRODUCTS.
USE THE WALL MOUNTING COMPONENTS WE SUPPLY – THEY HAVE BEEN TESTED AND WE KNOW THEY WORK.
THE WARRANTY COVERS MATERIAL AND WORKMANSHIP DEFECTS – NOT INSTALLATION ISSUES

SUPPLIED WALL MOUNTING COMPONENT KIT

Included in this kit is a brass-backing flange & chrome plated plastic cover, metric mounting screw(s) and special German glue. This product is suitable for a solid firm surface – like tiles, glass or very robust concrete walls – it is not suitable for soft materials (wood, plasterboard etc.) or painted surfaces.

INSTALLATION PROCEDURE

Step 1:

Remove the alcohol cleaning swab and thoroughly clean the surface of the wall surface where the accessory is to be mounted / glued. Using the same swab thoroughly clean the brass-backing flange(s) – specifically the side that has the machined recessed area.

Step 2:

Attach the wall-mounting component to the brass-backing flange using the supplied metric screw(s). This must be fixed to the smooth (not recessed) side of the flange. In the case of Above and Beyond ranges, there are no wall-mounting components, however it is important to fit the metric fixing screw(s) into the brass flange(s) and in Step 4 below to use the screw heads to align the flange(s) with the accessory fixing system.

Step 3:

Using the instruction on the glue packet, mix the 2-part glue inside the white plastic container supplied – this involves squeezing out the white paste into the white powder and carefully mixing all the contents together thoroughly using the supplied paddle pop stick.

Step 4:

Apply the white glue to the recessed side of the brass flange (apply more than required) and insert the wall-mounting component lightly into the accessory. In the case of Above & Beyond ranges this will just be the screw head. With the brass flange(s) fixed to the accessory, press the flange(s) onto the wall surface at the desired location, ensuring the accessory is level. Do not glue the flange to the grout lines if wall are tiled. The glue should ooze out on all sides and the flange should be pressed hard to the wall surface. Then carefully remove the accessory from the wall mounting component, leaving behind the brass flange and wall-mounting component glued to the wall surface.

Step 5:

Leave the glue to set for about one hour and then using a sharp blade remove excess glue around the brass flange. After 24 hours you may fit the chrome cover plate and the accessory onto the wall mounting component(s). Full strength will develop after 72 hours.

The last bastion of privacy, a space of peace and tranquillity, your Bathroom
Enjoy the look and feel of our European Bathroom fittings and fixtures.
Designed and made to the highest International and Australian standards.



Installation Guide

PLUS, MINUS & TAGO Plasterboard Fixing Kit

Version: 1.00

avenir®
FUTUREDESIGN

Thank you for choosing AVENIR Bathroom Accessories and for supporting Australian designed and manufactured products.

INSTALLATION PROCEDURE



1. Using the brass-mounting flange as a template, mark 2 holes on the plasterboard surface – NOTE the orientation above depends on the accessory range.
2. Drill 2 x 8mm holes in the plasterboard.
3. Insert the 2 supplied plasterboard anchors into the holes.
4. Remove the screws from the anchors and insert them through the brass mounting plate and back into the anchors.
5. Tighten the screws carefully to avoid over tightening.
6. Cover the brass flange with the supplied chrome cap
7. Using the supplied M4 screws, mount the aluminium wall mounting onto the brass flange.
8. Fit the bathroom accessory onto the aluminium wall mounting components.
9. Tighten the fixing grub screw.

Please note: Plasterboard is not an ideal material to mount bathroom accessories – this kit will provide the best possible mounting durability, however the strength of this method of fixing is limited by the inherent weakness of plasterboard material.